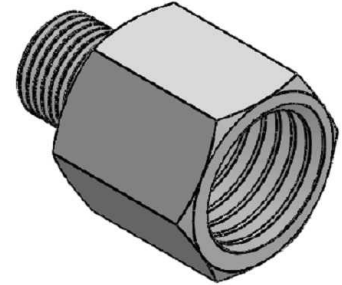
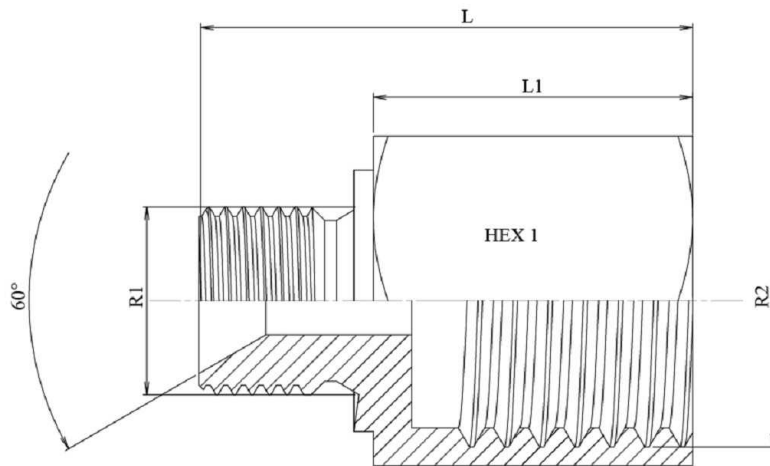


BSP Adaptors

Adaptors male-female

Reducer adaptor male BSP 60° - fixed female BSP

Stainless Steel AISI 316-L



Part n°	R1	R2	L	L1	HEX 1	ØC
Z10600204	M 1/8" BSP	F 1/4" BSP	30	21	19	3,5
Z10600206	M 1/8" BSP	F 3/8" BSP	26	17	22	3,5
Z10600402	M 1/4" BSP	F 1/8" BSP	31	18	17	6
Z10600406	M 1/4" BSP	F 3/8" BSP	31	18	22	6
Z10600408	M 1/4" BSP	F 1/2" BSP	38	25	27	6
Z10600604	M 3/8" BSP	F 1/4" BSP	35	21	22	8
Z10600608	M 3/8" BSP	F 1/2" BSP	39	25	27	8
Z10600804	M 1/2" BSP	F 1/4" BSP	38,5	21	27	11
Z10600806	M 1/2" BSP	F 3/8" BSP	39,5	22	27	11
Z10600812	M 1/2" BSP	F 3/4" BSP	44	26,5	32	11
Z10600816	M 1/2" BSP	F 1" BSP	45,5	28,5	41	11
Z10601206	M 3/4" BSP	F 3/8" BSP	35,5	17	32	15
Z10601208	M 3/4" BSP	F 1/2" BSP	40,5	22	32	16
Z10601216	M 3/4" BSP	F 1" BSP	47	28,5	41	16
Z10601612	M 1" BSP	F 3/4" BSP	48	26,5	41	22
Z10601620	M 1" BSP	F 1"1/4 BSP	53,5	32	50	22
Z10601624	M 1" BSP	F 1"1/2 BSP	59,5	40	55	22,2
Z10602016	M 1"1/4 BSP	F 1" BSP	53,5	28,5	50	30
Z10602420	M 1"1/2 BSP	F 1"1/4 BSP	59	32	55	33
Z10602432	M 1"1/2 BSP	F 2" BSP	68	40	70	33
Z10603224	M 2" BSP	F 1"1/2 BSP	68	40	70	46