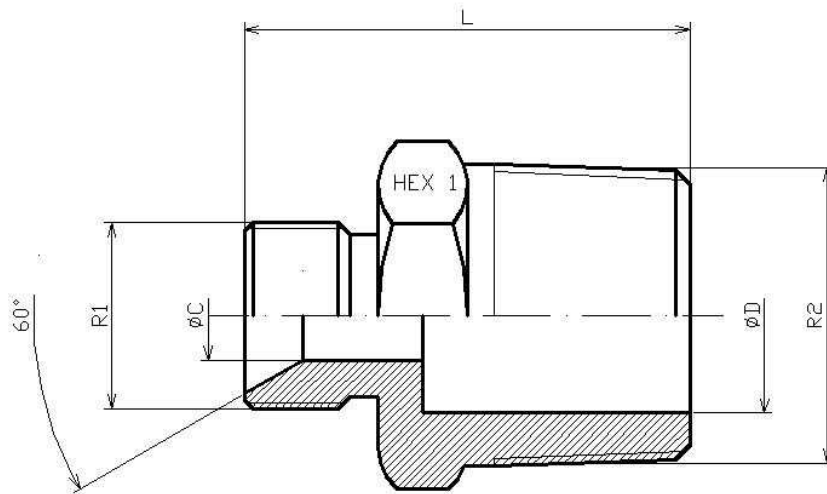


**Reducer adaptor male BSP 60° - male BSPT**

Stainless Steel AISI 316-L



Part n°	R1	R2	L	HEX 1	ØC	ØD
<b>Z10220204</b>	1/8" BSP	1/4" BSPT	28,5	17	3,5	8
<b>Z10220402</b>	1/4" BSP	1/8" BSPT	27,5	17	5	5
<b>Z10220406</b>	1/4" BSP	3/8" BSPT	31	19	6	6
<b>Z10220408</b>	1/4" BSP	1/2" BSPT	37,5	22	6	6
<b>Z10220412</b>	1/4" BSP	3/4" BSPT	41	27	5	18
<b>Z10220608</b>	3/8" BSP	1/2" BSPT	38,5	22	8	8
<b>Z10220612</b>	3/8" BSP	3/4" BSPT	40	27	8	17,5
<b>Z10220804</b>	1/2" BSP	1/4" BSPT	35,5	22	11	6
<b>Z10220806</b>	1/2" BSP	3/8" BSPT	36	22	11	8
<b>Z10220812</b>	1/2" BSP	3/4" BSPT	42	27	11	17,5
<b>Z10220816</b>	1/2" BSP	1" BSPT	47	36	11	22
<b>Z10221012</b>	5/8" BSP	3/4" BSPT	44	27	14	14
<b>Z10221204</b>	3/4" BSP	1/4" BSPT	37,5	27	17,5	6
<b>Z10221206</b>	3/4" BSP	3/8" BSPT	38	27	17,5	8
<b>Z10221208</b>	3/4" BSP	1/2" BSPT	42,5	27	17,5	11
<b>Z10221216</b>	3/4" BSP	1" BSPT	49	36	17,5	22
<b>Z10221612</b>	1" BSP	3/4" BSPT	48	36	22	17,5
<b>Z10221620</b>	1" BSP	1"1/4 BSPT	55	46	22	26
<b>Z10222016</b>	1"1/4 BSP	1" BSPT	54	46	26	22
<b>Z10222024</b>	1"1/4 BSP	1"1/2 BSPT	57	50	26	32
<b>Z10222420</b>	1 1/2" BSP	1 1/4" BSPT	58	50	30	30
<b>Z10222432</b>	1"1/2 BSP	2" BSPT	66	65	32	46